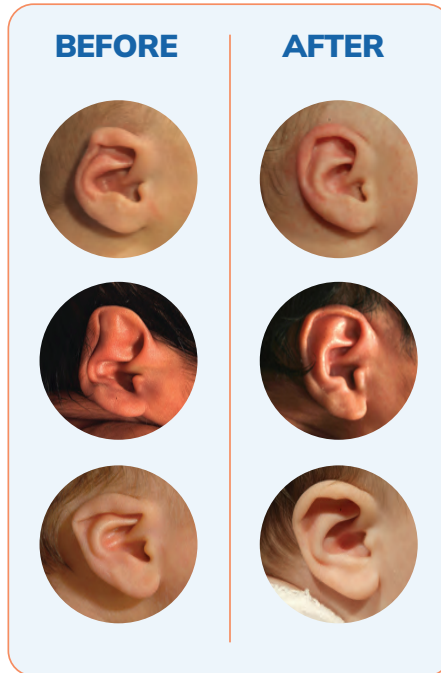




REAL RESULTS FROM REAL FAMILIES

These before and after photos show the impact of early treatment. EarWell® is soft, safe, and designed to help correct ear shapes — starting with their very first weeks.



EarWell®

from



If you have questions or concerns about your baby's ears, we're here to help.

844-509-0710

EarWell®
INFANT EAR CORRECTION SYSTEM



A GENTLE SOLUTION FOR INFANT EAR SHAPES

The EarWell® Infant Ear Correction System is available at Cranial Technologies® clinics offering a safe, non-surgical option for correcting newborn ear shapes.

To Schedule An Appointment
Please Call Us At:
844-509-0710

Scan this QR code to have a representative contact you.



Forever Shaping
What Comes Next™

PRO145 Rev00, ECO25-166, Effective 09/02/2025



Forever Shaping
What Comes Next™

SUPPORT YOUR BABY'S DEVELOPMENT FROM THE START

Some ear deformities can improve over time, but many do not. There's no way to know if an ear will improve naturally. Fortunately with the EarWell® Therapy you can be certain that your child's ear shape will be corrected.

EarWell is a soft, custom-fitted device that gently guides the ear into a corrective shape. The process is safe, non-invasive, and works best when started early — ideally in the first few weeks of life.



WHY EARLY EAR CORRECTION MAY HELP

Ear shape can play a role in a child's comfort as they grow. While every child is unique, early ear molding may reduce the need for surgery later on.

EarWell® offers a simple, non-surgical approach during a time when a newborn's cartilage is still pliable and responsive to gentle guidance.

WHAT TO EXPECT WITH EARWELL®



- Best results are achieved when applied in the first 1–3 weeks after birth
- Worn for approximately 4–6 weeks
- No surgery, sedation, or medication required
- Comfortable and well-tolerated

The EarWell device is applied during a short appointment at a Cranial Technologies® clinic. It stays in place to support corrective infant ear development during early growth.



BEFORE

DURING

AFTER

EarWell® | from Cranial Technologies®



Forever Shaping
What Comes Next™



Translation services available
by calling 844-509-0710